

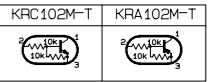
< M E M O >

Standard schematic diagrams

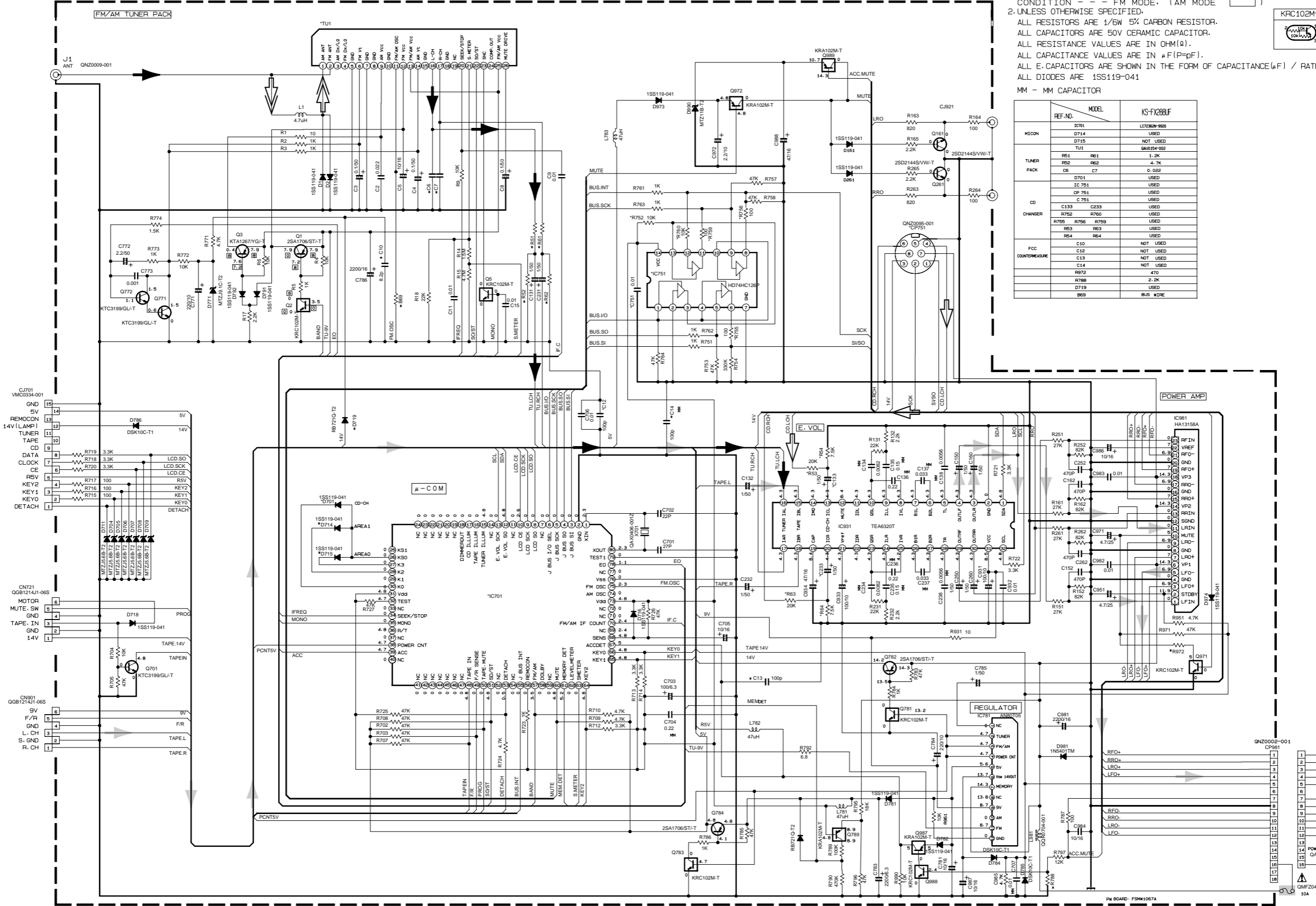
Receiver & system control circuit section

NOTES

1. VOLTAGES ARE DC-MEASURED WITH A DIGITAL VOLT METER WITHOUT INPUT SIGNAL. CONDITION --- FM MODE. (AM MODE)
2. UNLESS OTHERWISE SPECIFIED, ALL RESISTORS ARE 1/8W 5% CARBON RESISTOR. ALL CAPACITORS ARE 50V CERAMIC CAPACITOR. ALL RESISTANCE VALUES ARE IN OHM(Ω). ALL CAPACITANCE VALUES ARE IN μF(P=pF). ALL E-CAPACITORS ARE SHOWN IN THE FORM OF CAPACITANCE(μF) / RATED VOLTAGE(V). ALL DIODES ARE 1SS119-041



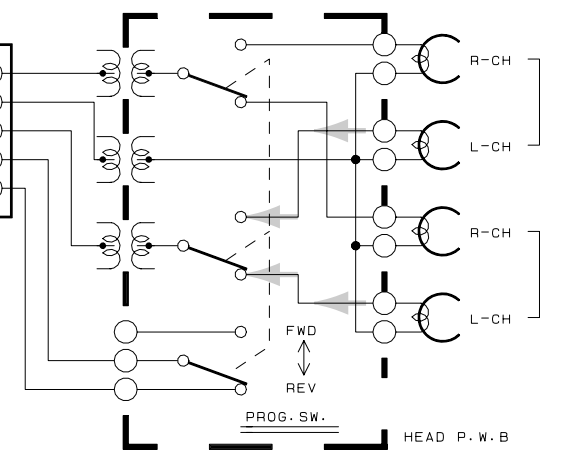
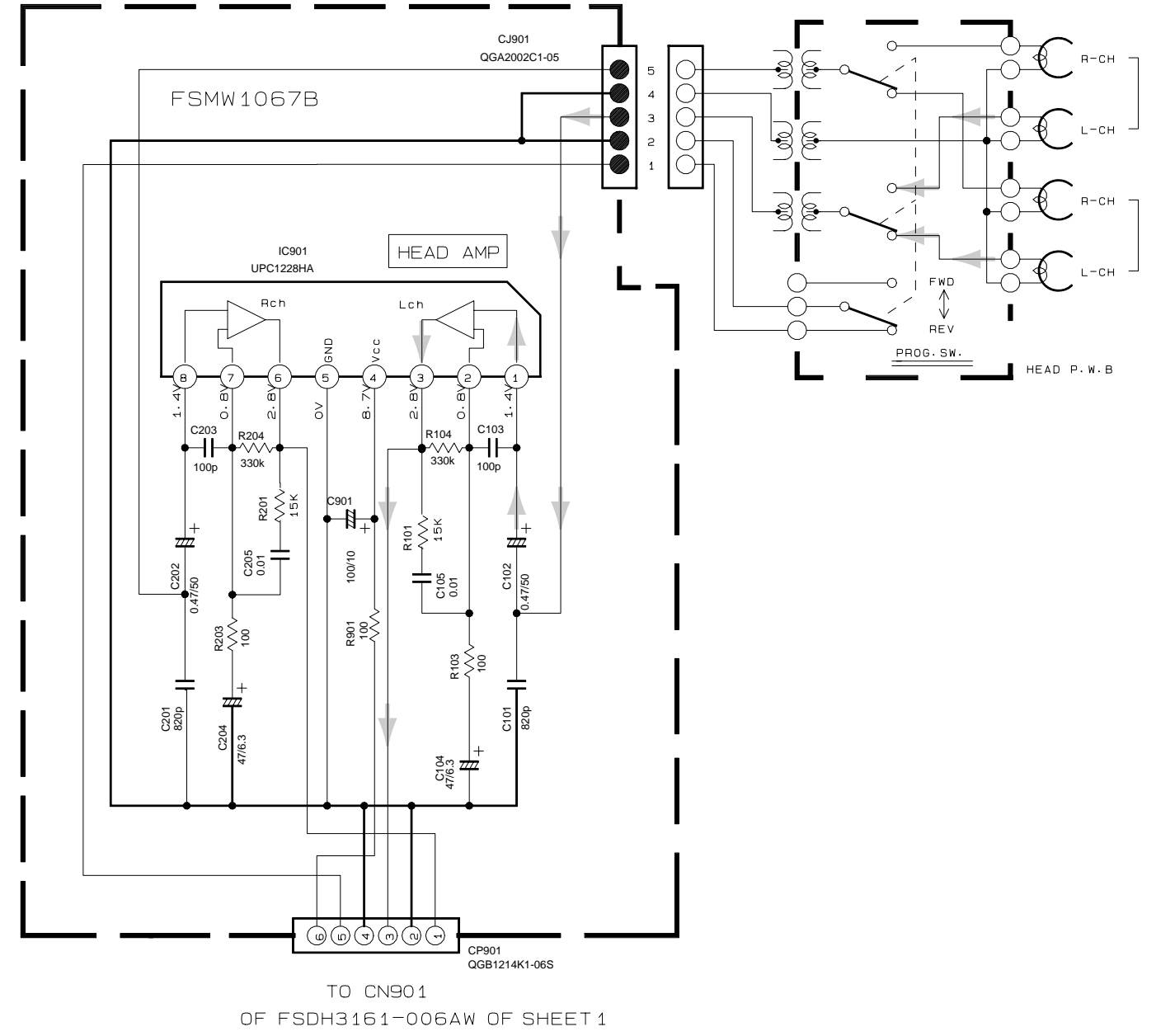
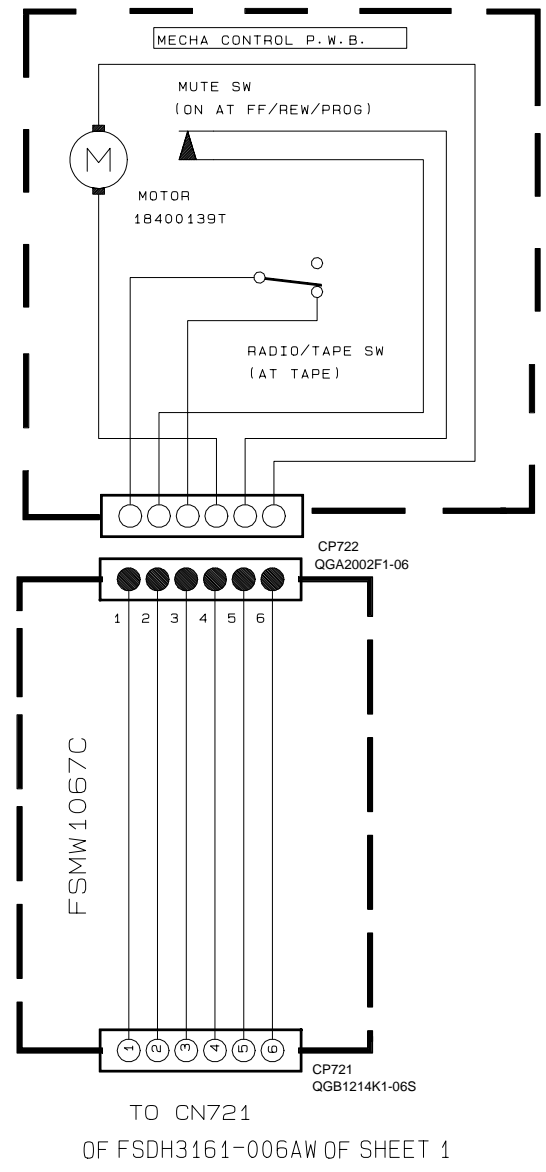
REF.NO.	MODEL	KS-FX288UF
IC701	LC7236N-9920	
MECON	D714	USED
	D715	NOT USED
	DAU054-002	
TUNER	R51 R61	2.2K
	R52 R62	4.7K
PACK	C6 C7	0.022
	D701	USED
	IC 751	USED
CD	CP 751	USED
CHANGER	C133 C233	USED
	R752 R760	USED
	R755 R756 R759	USED
	R53 R63	USED
	R54 R64	USED
FCC	C10	NOT USED
COUNTERMEASURE	C12	NOT USED
	C13	NOT USED
	C14	NOT USED
	R972	470
	R788	2.2K
	D719	USED
	B69	BUS WIRE



- ➔ FM radio signal
- ➔ AM radio signal
- ➔ CD signal
- ➔ Tape PB/Main signal
- ⚠ Parts are safety assurance parts. When replacing those parts make sure to use the specified one.

Head amplifier circuit section

5
4
3
2
1



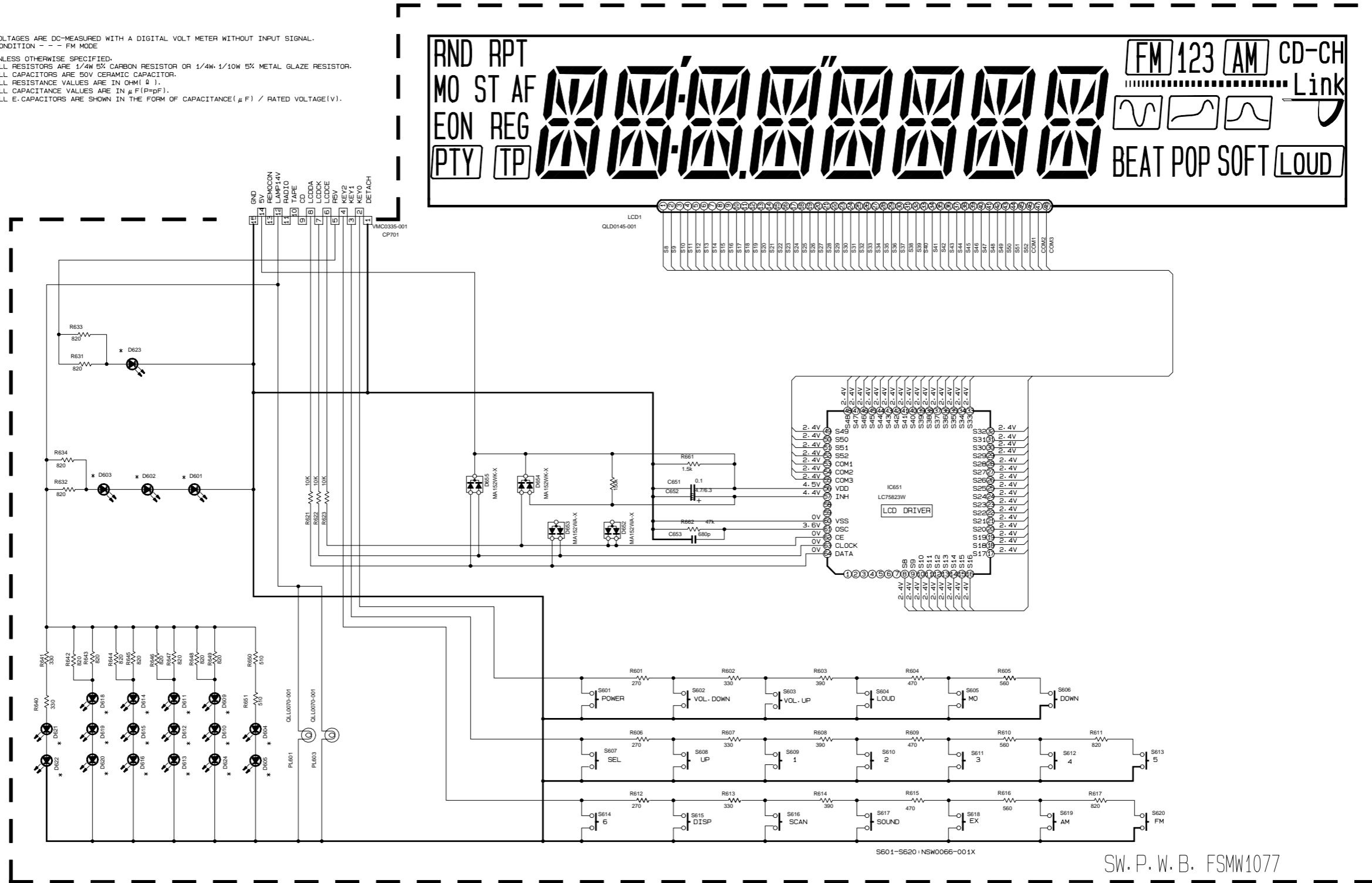
➔ Tape PB/Main signal

A B C 2-4 D E F G H

■ LCD driver & Operation with circuit section

NOTES

1. VOLTAGES ARE DC-MEASURED WITH A DIGITAL VOLT METER WITHOUT INPUT SIGNAL.
CONDITION - - FM MODE
2. UNLESS OTHERWISE SPECIFIED,
ALL RESISTORS ARE 1/4W 5% CARBON RESISTOR OR 1/4W-1/10W 5% METAL GLAZE RESISTOR.
ALL CAPACITORS ARE 50V CERAMIC CAPACITOR.
ALL RESISTANCE VALUES ARE IN OHM(Ω).
ALL CAPACITANCE VALUES ARE IN μF(P=pF).
ALL E. CAPACITORS ARE SHOWN IN THE FORM OF CAPACITANCE(μF) / RATED VOLTAGE(V).



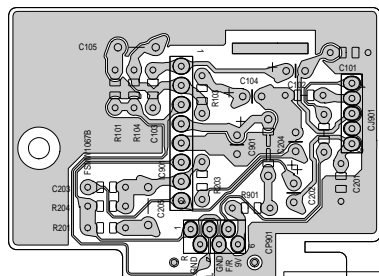
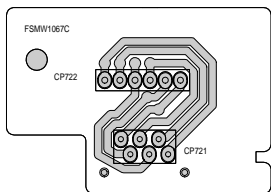
REF. NO.	VERSION	KS-FX288UF
D601 - D622 / D624		SML-310VT/JK/-X
D613		LNJ308GB1/1-3/X
D623		SML-310LT/MN/-X

SW. P. W. B. FSMW1077

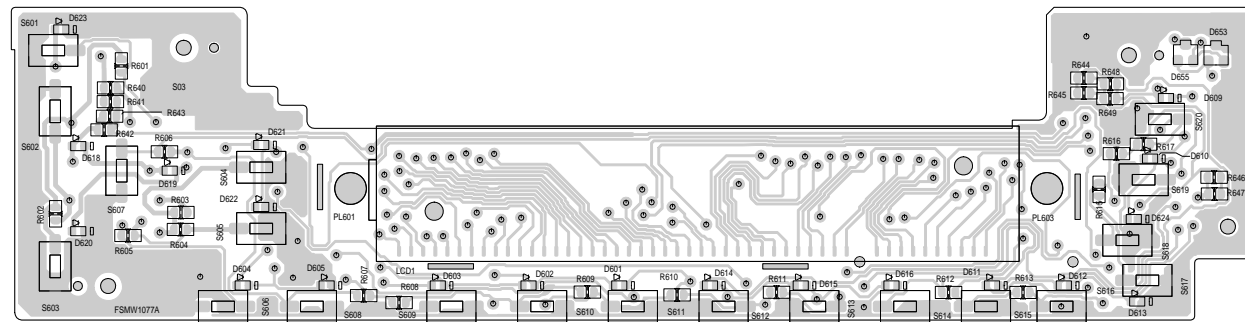
Printed circuit boards

■ Main board

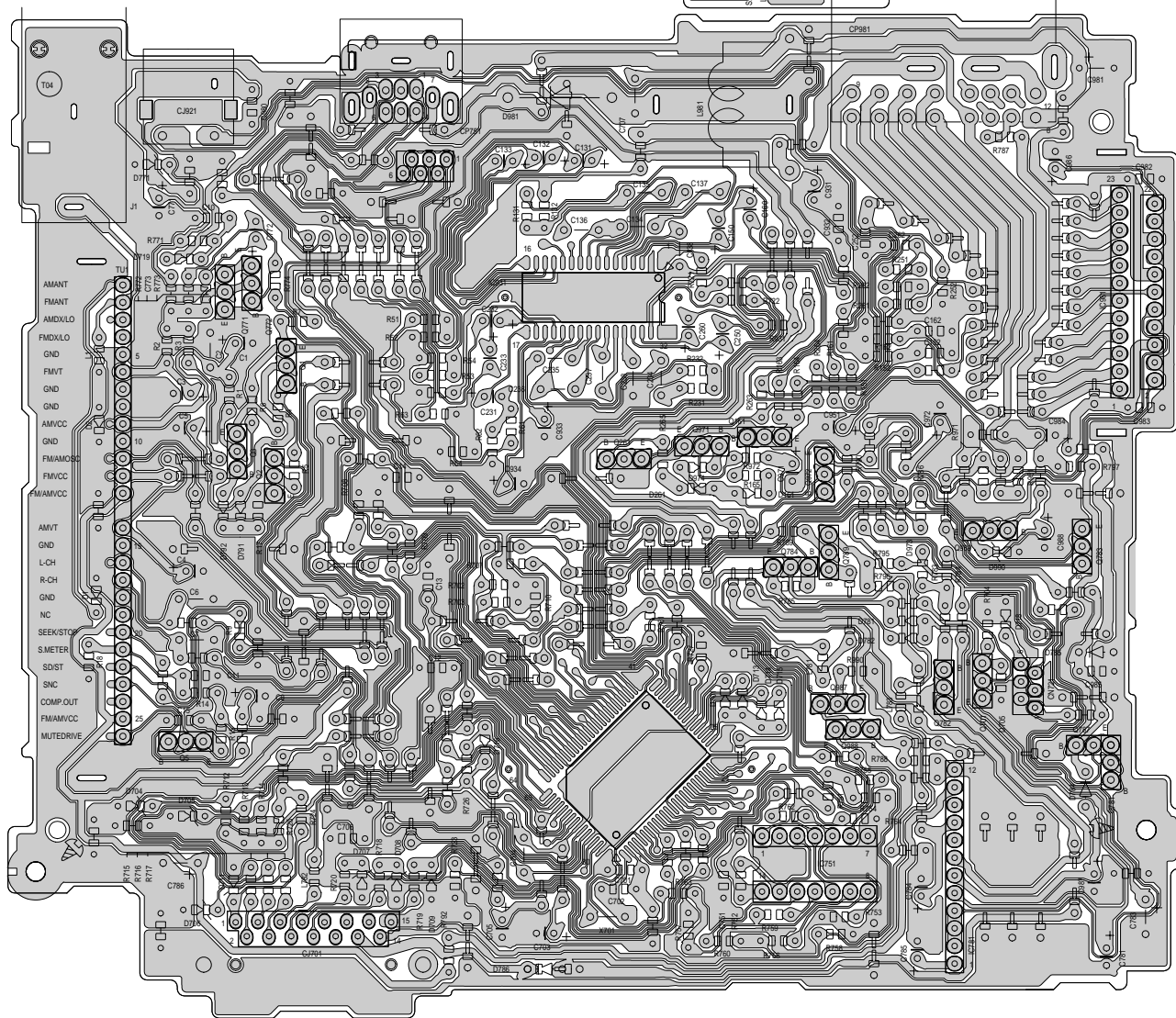
5



■ Front board(Forward side)

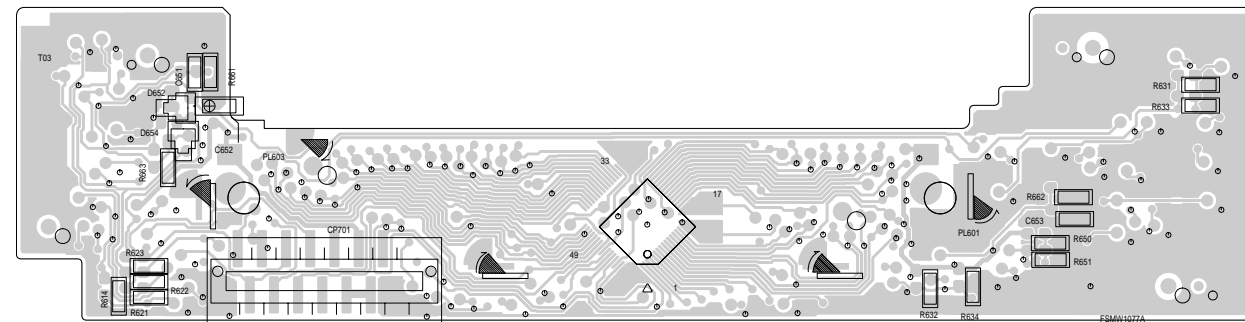


4



3

■ Front board(Reverse side)



2

1